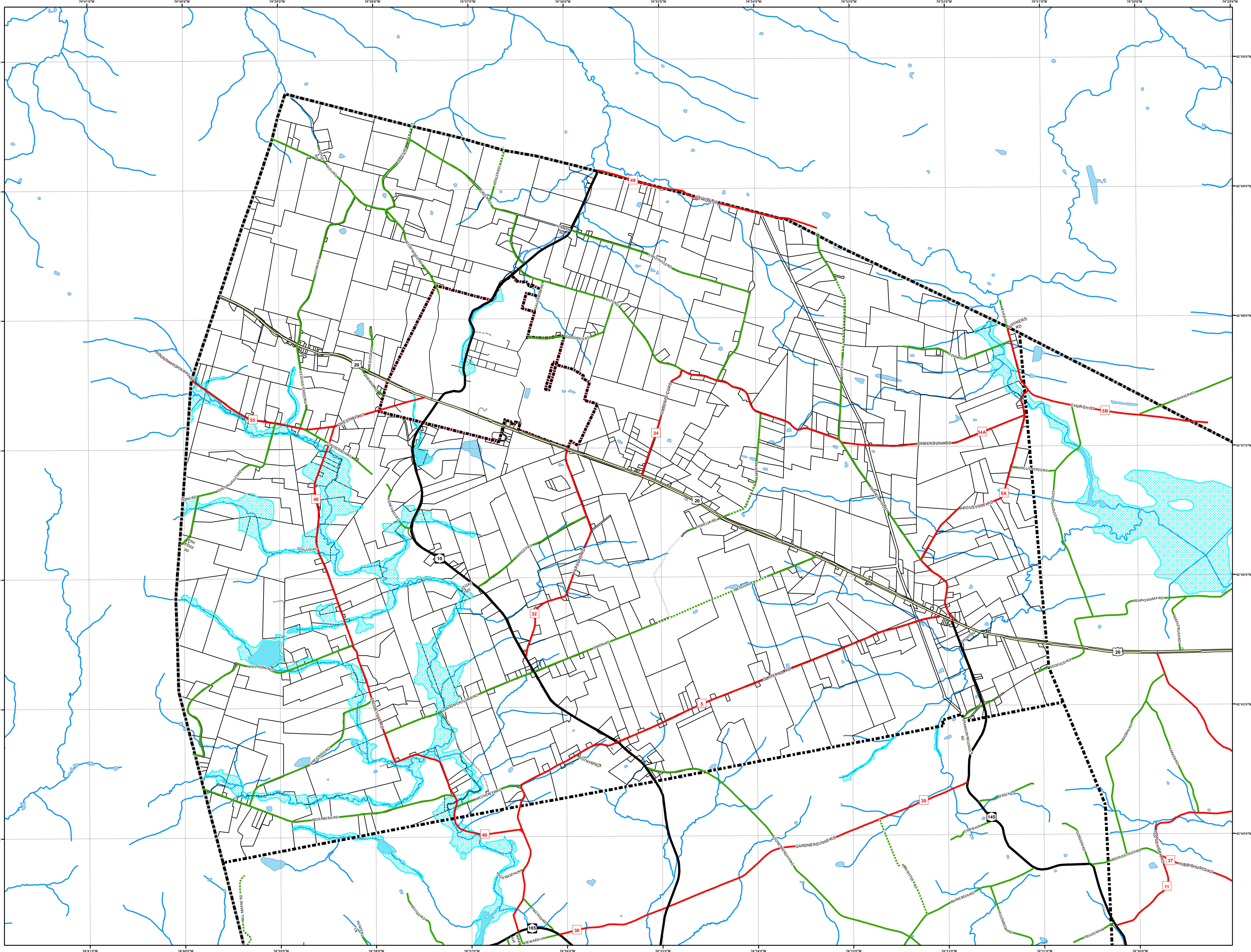
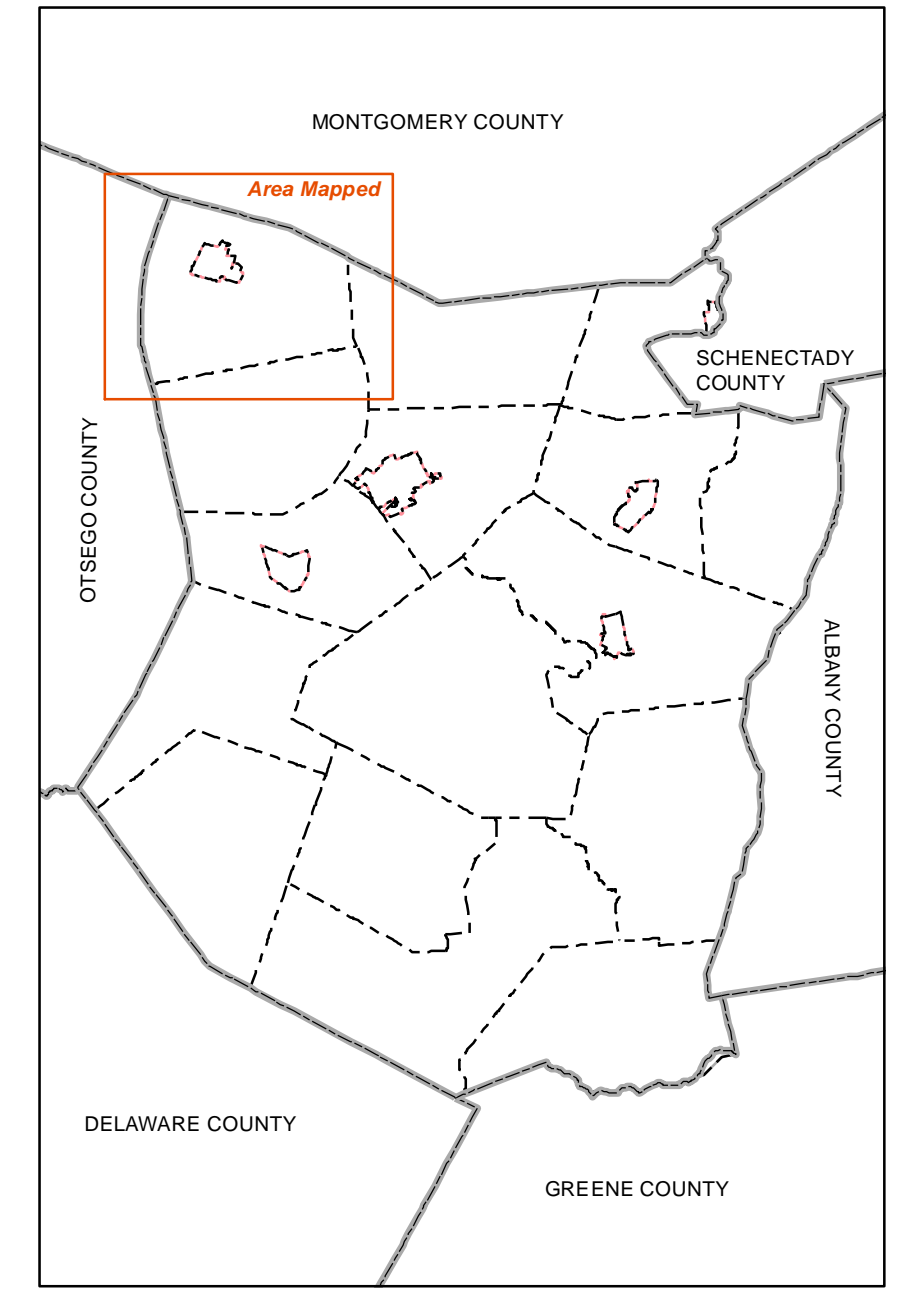


# Town of Sharon Comprehensive Plan Floodplain



**Legend**

- Interstate Highway
- US Highway
- State Highway
- County Highway
- Town Road
- ⋯ Seasonal
- ⋯ Minimum Maintenance
- Village Street
- ⋯ Truck Trail
- Private, Typical
- Private, Abandoned
- County Line
- Town Line
- Village Line
- NHDFlowline
- NHDWaterbody

Zone A - 100 Year Floodplain

Date: 1/17/2012

0 5,000 Feet 1 Mile

Community Planning & Environmental Associates

SCHOHARIE COUNTY PLANNING & DEVELOPMENT AGENCY