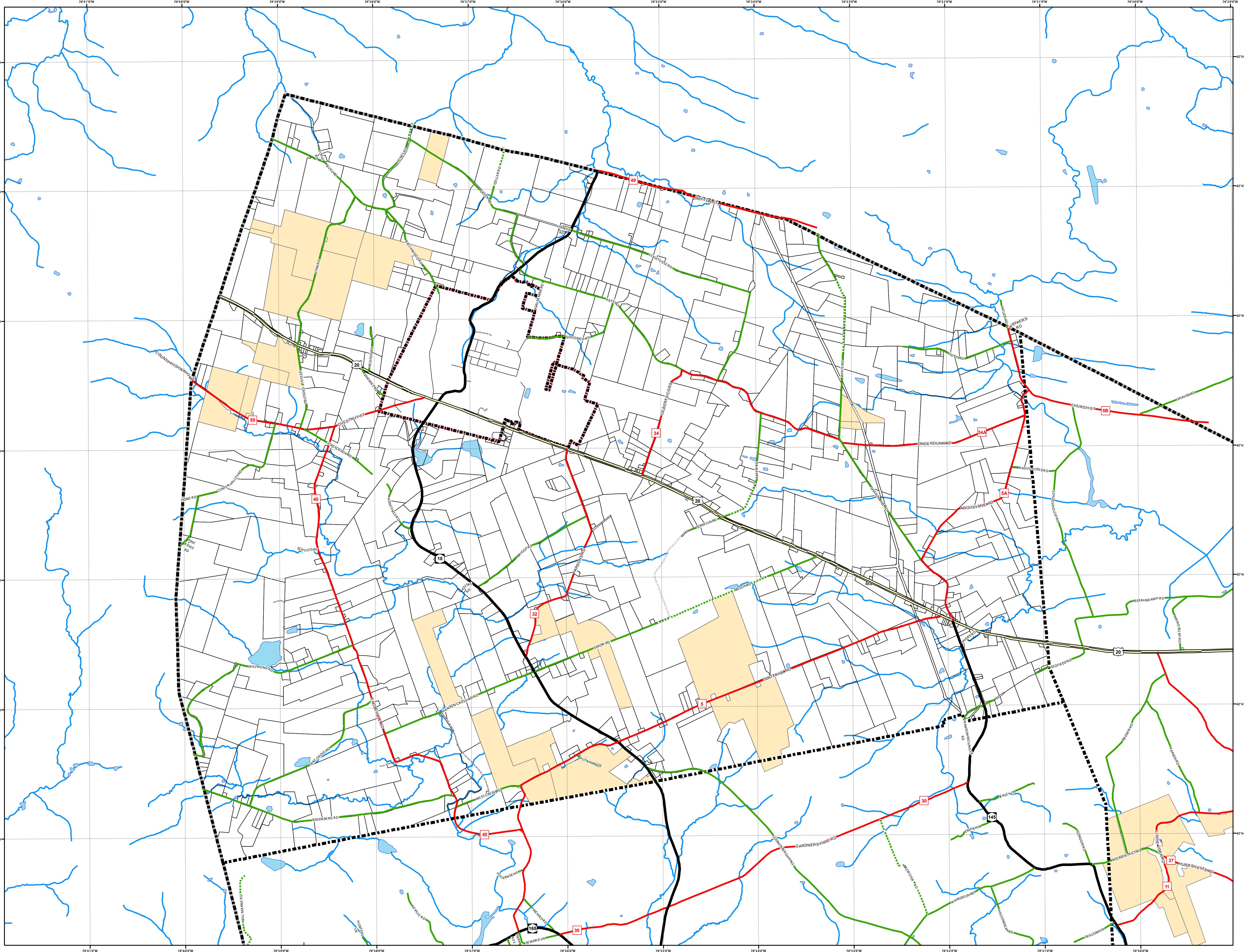
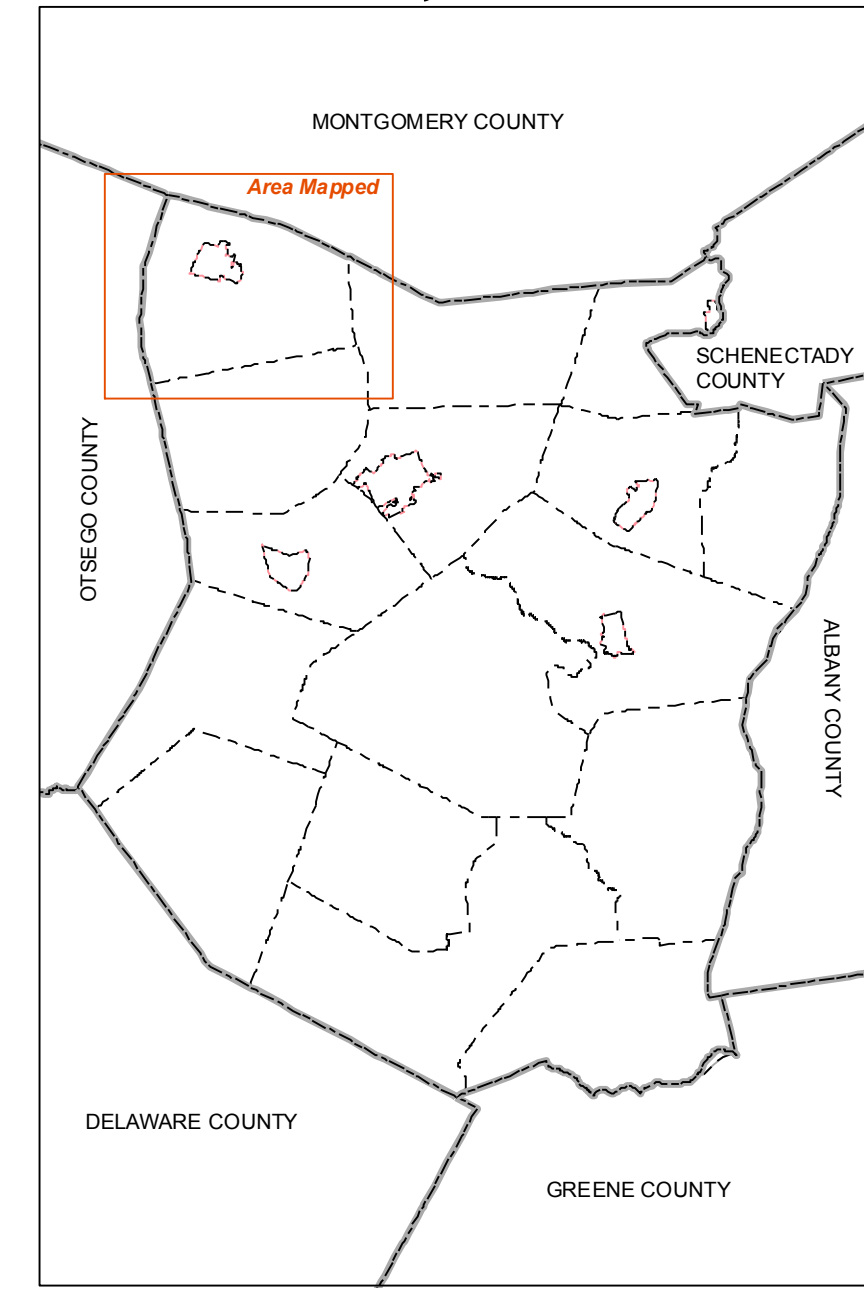


# Town of Sharon Comprehensive Plan

---  
Gas Leases  
February 21, 2012



**Legend**

- Interstate Highway
- US Highway
- State Highway
- County Highway
- Town Road
- Seasonal
- Minimum Maintenance
- Village Street
- Truck Trail
- Private, Typical
- Private, Abandoned
- County Line
- Town Line
- Village Line
- NHDFlowline
- NHDWaterbody

Gas Leased Parcels  
Parcels

Date: 2/21/2012

0 5,000 Feet 1 Mile

Community Planning &  
Environmental Associates

SCHOHARIE COUNTY PLANNING  
& DEVELOPMENT AGENCY